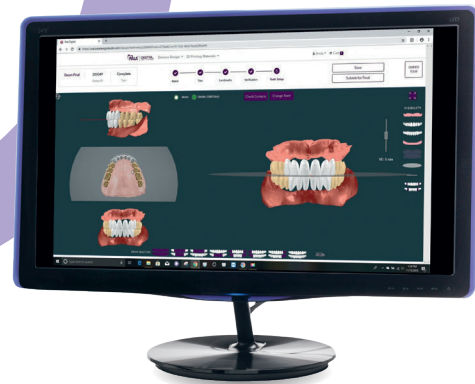


## DESIGN

### Pala Design Studio

Design dentures online in just 10 to 20 minutes!



## PRINT

### cara Print 4.0



### dima Print materials

for 8 indications. Denture materials are FDA-cleared.

Print most dental appliances in just one hour or less with 3D DLP technology.

## WASH & CURE

### cara Print Clean HiLite power 3D

Use cara Print Clean for automated, no-mess cleaning at the push of a button, followed by curing in the HiLite 3D.



# Your one-stop-shop for 3D-printed dentures.

The Pala Digital Dentures 2.0 workflow is now powered by cara® Digital Solutions and dima® Print Materials. Incorporating 3D scanning, design, and printing technologies, you can create beautiful, perfectly fitting dentures.

- **SCAN** with cara Scan 4.0 model and impression scanner
- **DESIGN** with Pala Design Studio web-based software
- **PRINT** with cara Print 4.0 3D DLP printer & dima Print materials
- **WASH** with cara Print Clean automatic 3D parts cleaner
- **CURE** with HiLite power 3D post-curing unit
- **FINISH** with Pala Polish; characterize (optional) with Pala cre-active

NEST • PRINT • CLEAN • CURE • FINISH



ALL in under 2 HOURS!\*



## Get the eBook: [pala3Ddenture.com](http://pala3Ddenture.com)

\*Two hours does not include scanning or design time. © 2019 Kulzer, LLC. All Rights Reserved. Distributed by: Kulzer, LLC, 4315 S. Lafayette Blvd., South Bend, IN 46614 Phone: (800) 431-1785 Fax: (877) 271-5211 kulzerUS.com

[pala3Ddenture.com](http://pala3Ddenture.com)



# Pala® Digital Dentures

Your one-stop-shop for digital denture production.

Giving a hand to oral health.



**KULZER**  
MITSUI CHEMICALS GROUP

## SCAN

### cara Scan 4.0

Easy and efficient.

### Compact:

cara Scan 4.0 fits into any setting thanks to its small size. Despite the slim packaging, everything you need is inside.

### Convenient:

You benefit by choosing a comprehensive digital workflow, all powered by equipment, software and materials from Kulzer.



### Completely open:

cara Scan 4.0 is a completely open system that allows import and export of the most common data formats, like PLY, OBJ, STL.

### Blue LED structured light:

the latest light technology for high-precision scans.